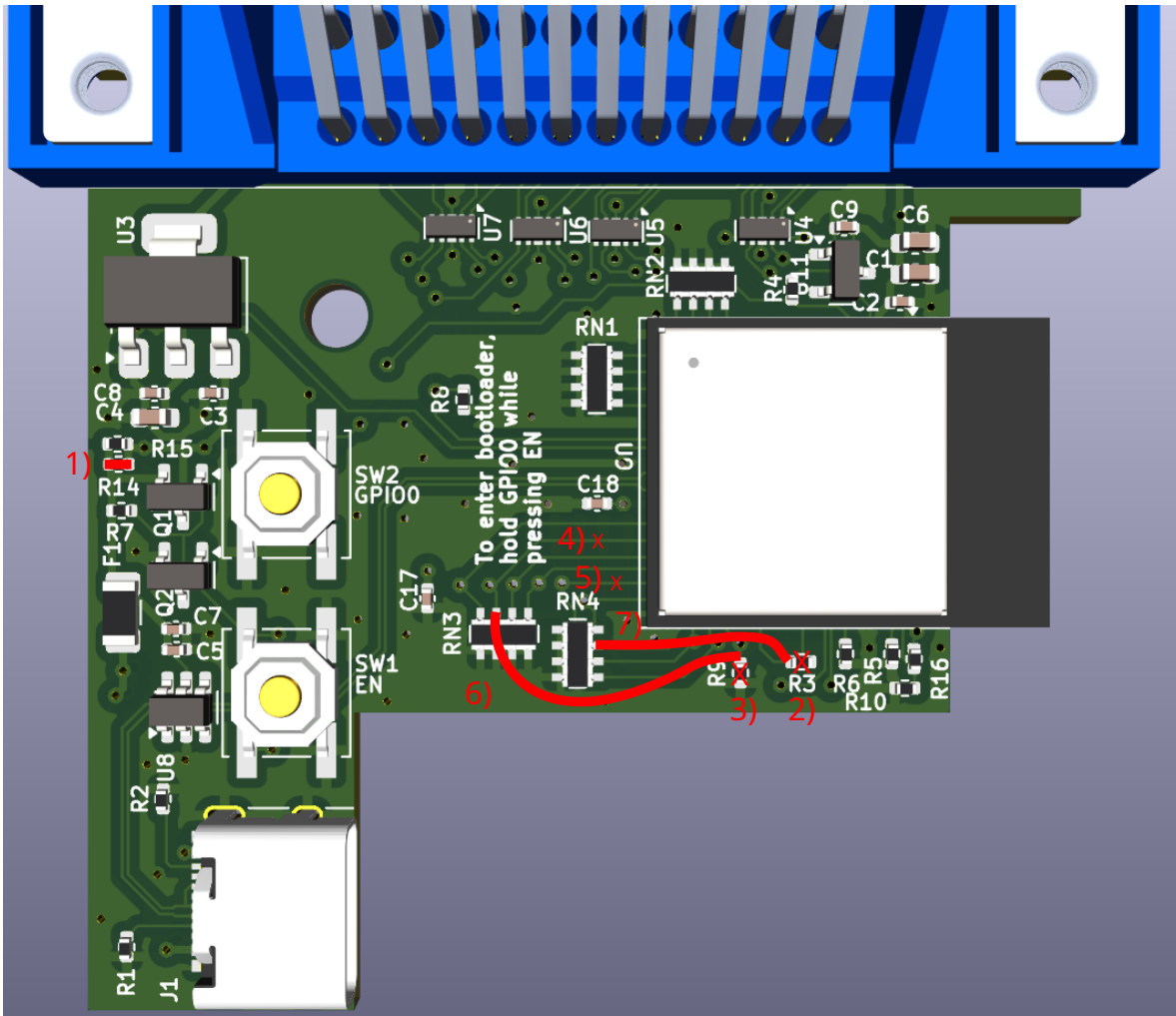


## AR488 Rev4 Rework Instructions



- 1) Bridge R14/R15 (one of them is fine)
  - this disables the inrush current limiting; replacing R14/R15 with 10R also works here
- 2) Remove R3 - pull-up not needed after rework
- 3) Remove R9 - pull-down not needed after rework
- 4) Cut signal T\_IFC close to U9
- 5) Cut signal T\_DAV close to U9
- 6) Connect pin 2 of R9 with pin 7 of RN3 (restores signal T\_IFC)
- 7) Connect pin 1 of R3 with pin 7 of RN4 (restores signal T\_DAV)
  
- 8) Cut ~{PE} at pin 11 of U1
- 9) Cut DC at pin 11 of U12
- 10) Connect ~{PE} (pin 11) of U1 with VCC (pin 20) (open-collector functionality not needed for AR488)
- 11) Connect DC (pin 12) of U12 with REN (pin 19) (REN and DC can be the same signal)



